

# PIVOTA® Fully Concealed & Adjustable Hinge

## PIVOTA® DX 190 3D DESIGN



### Hinge Description

Pivota Fully Concealed and adjustable hinge, suitable for use on non-rebated flush doors, suitable for use on Timber, Steel and Aluminium Door Systems, complete with Cover Plates.

**PIVOTA®**

**/B/a/S/y/s/**  
Bartels Systembeschläge GmbH

### Technical Details

Load Capacity	200 kg (per pair)
Overall Length (Door / Frame)	235mm
Overall Width (Door / Frame)	30mm / 32mm
Maximum Opening Angle	180 °
Minimum Door Thickness	44mm
Adjustability	3 Dimensional (Side, Height, Compression)

### Available Accessories

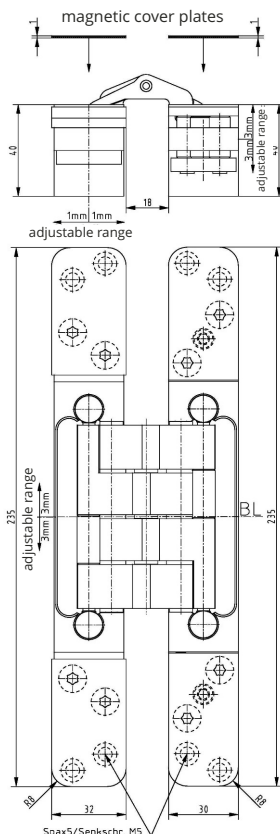
Receiver Plate for Steel Frame  
Hinge Retainer Plate for Casing and Steel Frames

### Installation Accessories

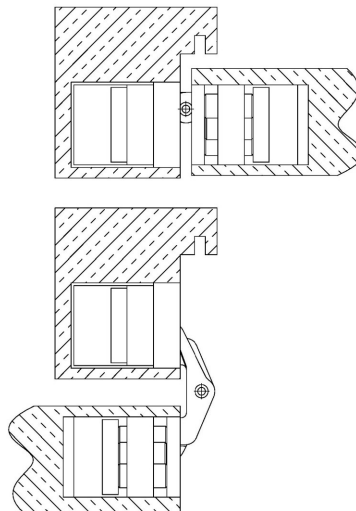
Universal Routing Kit  
Router Template (2 Part Door & Frame)  
Intumescent Kit (White or Black)



Also available as a Standard Version without Cover Plates



### Section drawing



**PRODUCT CODE:**  
**Pivota DX190 3D Design**

**MIN DOOR THICKNESS:**  
**44 mm**

**MAX ADJUSTABLE DOOR WEIGHT:**  
**200 kg (per pair)**

**FR DETAIL:**  
**FD30 FD60**



**Standard finishes available**

Code	Finish
SNP	Satin Nickel
SSS	Simulated Stainless

Full range of decorative finishes available

